

 **SHOES**
FOR CREWS™ | STEP
INTO
ACTION™



2025

**THE ORIGINAL
SLIP-RESISTANT
FOOTWEAR SINCE 1984.**

**SAFETY.
FASHION.
COMFORT.**



**SAFETY | FASHION | COMFORT IS MORE THAN A
PROMISE. IT'S OUR PASSION.**

We live and work to create safe, attractive and comfortable shoes to make work life that much easier. See for yourself...

2025 NEWS

OUR STYLES FOR ORTHOPEDIC INSOLES:

Orthopedic insoles are used to treat or alleviate foot problems, such as:

- Foot misalignments
- Relief of pressure points
- Foot arch stabilisation
- Pain relief
- Gait improvement
- Injury prevention

According to the requirements for safety and occupational footwear, orthopedic insoles must be tested with the respective shoe for EU-type examination. This means that an orthopedic insole may only be used if it has been certified with the occupational shoe. All Shoes For Crews styles marked with the adjacent symbol are certified with the Novaped Protect Soft insole.



AVAILABLE SOON: NEW MIDSOLE TECHNOLOGY REVIVE™ CUSHIONING FOAM

REVIVE™ midsole foam is lightweight, high rebound, and resists compression set over time. The first styles equipped with this innovative cushioning foam will be Zinc and Radium.

revive™
cushioning foam

CONTENTS

04	Product overview
06	Athletic shoes
10	Casual shoes
14	Dress shoes
20	Step into action: SFC PRO
22	Safety shoes
28	Safety shoes from PUMA
30	M.A.P.S. Shoes for military, ambulance, police, security
36	Wellingtons
38	Overshoes, accessories, mats
42	Our product pledge
44	Our outsole technologies
48	Purchasing tips
50	Reducing our ecological footprint





STYLE MEN WOMEN UNISEX PAGE CATEGORY



SAFETY SHOES

Barra			■ □	23	S3L FO SR LG ESD	■	■	■		■
Bergamo			■	23	S3L HRO FO SR ESD	■	■	■		■
Bonnie		■		25	S3L FO SR	■	■	■		■
Brandon			■ □	23	S3L FO SR LG ESD	■	■	■		■
Cambridge II ST	■			24	S2 FO SR	■	■	■	■	■
Catania			■ □	24	S3L HRO FO SR	■	■	■		■
Clyde	■			25	S3L FO SR	■	■	■		■
Colly			■	25	S3L FO SR ESD	■	■	■		■
Engineer IV CT			■	25	S7L SR LG		■	■		■
Executive Wing Tip II ST	■			26	S2 FO SR		■	■		■
Fergus			■ □	26	S3L FO SR	■	■	■		■
Forkhill			■	26	S3L SR LG		■	■		■
Inny			□	27	S3L FO SR	■	■	■		■
Salerno			■ □	27	S3L HRO FO SR	■	■	■		■
Triston II SB			■ □	27	SB E SR	■	■			

SAFETY SHOES PUMA

Airtwist			□	29	S3S ESD FO HRO SR	■	■	■		■
Frontside			■ ■	29	S1PS ESD FO HRO SR	■	■	■		■

M.A.P.S. | SHOES FOR MILITARY, AMBULANCE, POLICE, SECURITY

Beltra			■	31	06 SR		■		■	
Callan Low			■	31	06 HI CI SR ESD LG		■		■	
Callan Mid			■	31	06 HI CI SR ESD LG		■		■	
Cambridge GL			■	32	02 SR ESD		■		■	
Carrig Low			■	32	06 HI CI SR ESD LG		■		■	
Carrig Mid			■	32	06 HI CI SR ESD LG		■		■	
Darver			■	33	06 HI CI HRO SR LG		■		■	
Defense High			■	33	06 HRO SR ESD LG		■		■	
Defense Mid			■	34	06 HRO SR ESD LG		■		■	
Delvin			■	34	S7L CI SR		■		■	■
Guard Mid			■	35	S7L HRO SR ESD LG		■		■	■
Guard High			■	35	S7L HRO SR ESD LG		■		■	■
Stratton III			■	35	06 SR LG		■		■	

WELLINGTONS

Bastion			■ □	37	S4 SRC FO	■		■		■
Guardian			■ □	37	S4 SRC FO	■		■		■
Sentinel			■ ■ □	37	S4 SRC FO	■		■		■

OVERSHOES AND ACCESSORIES

Crewguard® Stretch			■	39	SR FO	■		■		■
Crewguard® Safety			■	39	SR FO Toe-Protection	■		■		■
Insoles, socks				40						
Mats				41						

SAFETY SYMBOLS AND PRODUCT FEATURES IN THIS CATALOGUE



- SFC outsole
- 4SG Four Seasons Grip outsole
- ICE PRO outsole
- Compatible with orthopedic insoles according to PPE standards

50+ Minimum order quantity of 50 pairs for UK customers apply

ATHLETIC SHOES



RUNNING, WALKING, STANDING – THE ATHLETIC RANGE DOES IT ALL AND GETS YOU COMFORTABLY THROUGH THE DAY.

All Athletic designs have a cushioned removable insole and are engineered with our extremely slip-resistant outsole.



COLLY SOFT TOE

Unisex: 65659 Black 3-13 (36-48)

EN ISO 20347:2022 [OB E FO SR]

- > Padded collar and tongue
- > Removable cushioned insole (recycled EVA)
- > Energy-absorbing heel construction
- > Clog-resistant outsole with TripGuard
- > Water-resistant upper made from recycled polyester and recycled microfibre
- > Polyester lining
- > Metal-free, antistatic, vegan
- > Resistant to fuel oil
- > Weight per shoe: 384 grams (based on size 42)



CONDOR II

Unisex: 22270 Black 2.5-13 (35-48)
22336 White 2.5-13 (35-48)

EN ISO 20347:2022 [OB E SR]

- > Padded collar and tongue
- > Removable cushioned insole (recycled EVA)
- > Energy-absorbing heel construction
- > Soft leather upper with protective membrane against spills
- > Water-repellent
- > Recycled polyester lining
- > Metal-free
- > Wider heel for comfort and traction
- > Stable and durable style
- > Weight per shoe: 471 grams (based on size 43)





ENDURANCE II MEN | VITALITY II WOMEN

Men:	22782 Black	5.5-15 (39-50)
Women:	28362 Black	2.5-8 (35-42)
	24759 Blue/grey	2.5-8 (35-42)



- > Removable cushioned insole (recycled EVA)
- > Flexible outsole with TripGuard
- > Lightweight with great ventilation
- > Synthetic mesh with spill-resistant membrane
- > Water-repellent
- > Recycled polyester lining
- > Metal-free
- > Vegan
- > Weight per shoe: 240 grams (based on size 42)



EVERLIGHT

Men:	22273 Black	6-12 (39-47)
	22274 White	6-12 (39-47)
Women:	22272 Black	2.5-8 (35-42)
	22275 White	2.5-8 (35-42)



EN ISO 20347:2022 [OB E SR]

ECO Men:	22337 Black	5-13 (38-48)
ECO Women:	22330 Black	2.5-8 (35-42)

- > Lightweight foam technology in the midsole for high cushioning comfort and a comfortable fit
- > Removable cushioned insole (recycled EVA)
- > Energy-absorbing heel construction
- > Flexible outsole with TripGuard
- > Easy-clean outsole
- > Breathable knitted upper
- > Recycled polyester lining
- > Metal-free
- > Vegan
- > Weight per shoe: 191 grams (based on size 38)

ECO





EVOLUTION II MEN | REVOLUTION II WOMEN

Men:	21211 Black	5-15 (38-50)
	28289 White	5-14 (38-49)
Women:	29167 Black	2.5-8 (35-42)
	28093 White	2.5-8 (35-42)



- > Removable cushioned insole (recycled EVA)
- > Outsole with airbag for extra support
- > Seamless, easy-to-clean, single-piece construction
- > Synthetic mesh upper for cool feet
- > Water-repellent upper
- > Recycled polyester lining
- > Metal-free
- > Vegan
- > Weight per shoe: 390 grams (based on size 42)



BESTSELLER

ECO

FREESTYLE II MEN | LIBERTY II WOMEN

ECO Men:	32302 Black	5-13 (38-48)
ECO Women:	32301 Black	2.5-8 (35-42)

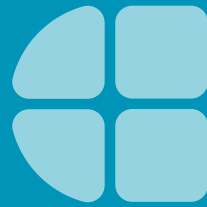


- > Padded collar and tongue
- > Removable cushioned insole (recycled EVA)
- > Slip-resistant outsole with large lug pattern
- > Lightweight and durable recycled synthetic upper
- > Water-repellent upper
- > Recycled polyester lining
- > Metal-free
- > Vegan
- > Weight per shoe: 345 grams (based on size 42)



Even on longer days, the Athletic range will stay with you all the way to the end.

CASUAL SHOES



**SHOES FIT FOR PURPOSE, FROM MORNING TO NIGHT:
COMFORT UNDERFOOT AND IN A CASUAL STYLE**

Our casual designs are lightweight with a cushioned removable insole. They are fit for purpose all day long thanks to their comfort and our highly slip-resistant outsole.



CATER II

Men: 41439 Black 5-15 (38-50)
 Women: 40187 Black 2.5-8 (35-42)

EN ISO 20347:2022 [OB E SR]

- > Padded collar
- > Removable cushioned insole (recycled EVA)
- > Energy-absorbing heel construction
- > Water-resistant upper
- > Recycled polyester lining
- > Metal-free
- > Weight per shoe: 426 grams (based on size 42)



DELRAY

Unisex: 38649 Black 2.5-12 (35-47)

- > Removable cushioned insole (recycled EVA)
- > Tapered outsole helps to minimise risk of tripping
- > Slip-resistant rubber outsole
- > Full grain natural leather upper
- > Recycled polyester lining
- > Metal-free
- > Water-resistant upper
- > Weight per shoe: 430 grams (based on size 42)



FINN MEN | MAVI WOMEN

Men: M11057 Black 6-12 (39-47)
 Women: M31174 Black 2.5-9 (35-43)

- > Elastic inserts for a slip-on style
- > Optional laces for a classic sneaker look
- > Removable cushioned insole (recycled EVA)
- > Energy-absorbing heel construction
- > Three-hole arch ventilation for breathability
- > Water-resistant, full grain leather upper
- > Recycled polyester lining
- > Metal-free
- > Easy to clean
- > Weight per shoe: 434 grams (based on size 42)





Lifa

KARINA

Women: 36907 Black 2.5-9 (35-43)
32709 White 2.5-8 (35-42)



- > Removable cushioned insole (recycled EVA)
- > Lightweight with extra cushioning
- > Easy-lacing system
- > Synthetic upper
- > Recycled polyester lining
- > Metal-free
- > Water-resistant upper
- > Vegan
- > Weight per shoe: 230 grams (based on size 38)



BESTSELLER

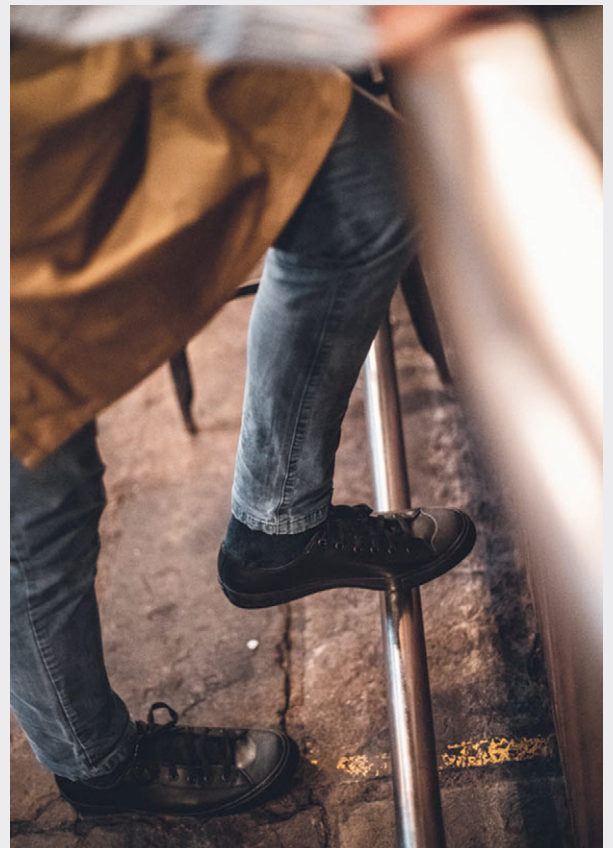
OLD SCHOOL IV

Unisex 36111 Black 2.5-12 (35-47)
38960 White 3-12 (36-47)



EN ISO 20347:2022 [OB E SR]

- > Removable cushioned insole (recycled EVA)
- > Double-thick insole with deep cushioning
- > Coated leather upper
- > Water-repellent
- > Recycled polyester lining, metal-free
- > Weight per shoe: 380 grams (based on size 42)





RADIUM



Unisex: 69578 Black 4-12 (37-47)

EN ISO 20347:2022 [OB E SR]

- > Removable cushioned insole (recycled EVA)
- > Energy-absorbing heel construction
- > Tapered outsole minimises risk of tripping
- > Lightweight and durable EVA material
- > Metal-free, vegan
- > Water-resistant material
- > Weight per shoe: 278 grams (based on size 38)



SALOON II



Men: 43261 Black 5-15 (38-50)

Women: 47808 Black 2.5-8 (35-42)

EN ISO 20347:2022 [OB E SR]

- > Removable cushioned insole (recycled EVA)
- > Superior slip-resistant outsole with TripGuard
- > Energy-absorbing heel construction
- > Full grain natural leather upper
- > Recycled polyester lining
- > Metal-free
- > Water-resistant upper
- > Easy to clean
- > Weight per shoe: 451 grams (based on size 42)



ZINC



Unisex: 66064 Black 4-13 (37-48)

62138 White 4-13 (37-48)

EN ISO 20347:2022 [OB E SR]

- > Different traction patterns across the slip-resistant outsole appropriate for the job, work surface, and environment
- > Energy-absorbing heel construction
- > Extralight, durable EVA material
- > Metal-free, vegan
- > Water-resistant material
- > Weight per shoe: 272 grams (based on size 38)



DRESS SHOES



MORE THAN JUST SMART, OUR DRESS STYLES GET YOU COMFORTABLY THROUGH THE DAY.

They look professional and allow you to stand on your own two feet for hours on end with no restrictions: This epitomises our dress designs. We use supple materials and innovative padding and cushioning – all with an easy-to-clean finish.



AMBASSADOR II

Men: 20331 Black 5-12 (38-47)

EN ISO 20347:2022 [OB SR]

- > Removable cushioned insole (recycled EVA)
- > Padded collar
- > Water-resistant full grain leather upper
- > Recycled polyester lining
- > Metal-free
- > Weight per shoe: 350 grams (based on size 42)



ARISTOCRAT IV

Men: 20311 Black 5-12 (38-47)

EN ISO 20347:2022 [OB SR]

- > Removable cushioned insole (recycled EVA)
- > Water-resistant full grain leather upper
- > Recycled polyester lining
- > Metal-free
- > Weight per shoe: 350 grams (based on size 42)



BESTSELLER

CAMBRIDGE III

Men: 20321 Black 5-14 (38-49)

EN ISO 20347:2022 [OB SR]

- > Classic professional style
- > Padded comfort collar
- > Removable cushioned insole (recycled EVA)
- > 360° stitch-reinforced outsole
- > Water-resistant full grain leather upper
- > Recycled polyester lining
- > Metal-free
- > Weight per shoe: 360 grams (based on size 42)





ENVY III

Women: 52263 Black 2.5-8 (35-42)

EN ISO 20347:2022 [OB SR]

- > Removable cushioned insole (recycled EVA)
- > Steel shank
- > Shock-absorbing rubber heel
- > Heel height 3.8 cm
- > Water-resistant full grain leather upper
- > Recycled polyester lining
- > Weight per shoe: 245 grams (based on size 38)



EXECUTIVE WING TIP IV

Men: 20301 Black 5-12 (38-47)

EN ISO 20347:2022 [OB SR]

- > Removable cushioned insole (recycled EVA)
- > Water-resistant full grain leather upper
- > Recycled polyester lining
- > Metal-free
- > Weight per shoe: 350 grams (based on size 42)



JENNI

Women: 3616 Black 2.5-8 (35-42)

EN ISO 20347:2022 [OB SR]

- > Cushioned insole (recycled EVA)
- > Heel height 1.2 cm
- > Water-resistant full grain leather upper
- > Recycled polyester lining
- > Metal-free
- > Weight per shoe: 280 grams (based on size 38)





MADISON III

Women: 57889 Black 2.5-8 (35-42)

EN ISO 20347:2022 [OB SR]

- > Removable cushioned insole (recycled EVA)
- > Heel height 2.5 cm
- > Water-resistant full grain leather upper
- > Recycled polyester lining
- > Metal-free
- > Weight per shoe: 248 grams (based on size 38)



MARY JANE II

Women: 3002 Black 2.5-9.5 (35-44)

EN ISO 20347:2022 [OB SR]

- > Cushioned insole (recycled EVA)
- > Comfort fitting with adjustable strap
- > Water-resistant full grain leather upper
- > Recycled polyester lining
- > Metal-free
- > Weight per shoe: 310 grams (based on size 38)



A pain-free day thanks to supple materials and innovative cushioning technology.





REESE

Men: 57160 Black 2.5-8 (35-42)

EN ISO 20347:2022 [OB SR]

- > Tailored fit style with extra cushioning
- > Removable cushioned insole (recycled EVA)
- > Hollow heel allows pressure to dissipate with each step
- > Heel height 1.2 cm
- > Water-resistant full grain leather upper
- > Recycled polyester lining
- > Metal-free
- > Weight per shoe: 241 grams (based on size 38)



50+



SENATOR

Men: 1201 Black 5-12 (38-47)
1211 Brown 6-12 (39-47)

- > Removable cushioned insole (recycled EVA)
- > Padded collar
- > Cushioned footbed with leather-lined insole
- > Water-resistant full grain leather upper
- > Recycled polyester lining
- > Metal-free
- > Weight per shoe: 385 grams (based on size 42)





STATESMAN

Men: 1202 Black 6-12 (39-47)

- > Removable cushioned insole (recycled EVA)
- > Padded collar
- > Cushioned footbed with leather-lined insole
- > Water-resistant full grain leather upper
- > Recycled polyester lining
- > Metal-free
- > Weight per shoe: 345 grams (based on size 42)



WILLA

Women: 55452 Black 2.5-8 (35-42)

EN ISO 20347:2022 [OB SR]

- > Removable cushioned insole (recycled EVA)
- > Steel shank
- > Heel height 3.8 cm
- > Water-resistant full grain leather upper
- > Recycled polyester lining
- > Weight per shoe: 266 grams (based on size 38)



€

OB

SR



STEP INTO ACTION



FOCUSED ON THE INDUSTRIAL SECTOR — OUR SPECIAL-PURPOSE BRAND: SFC PRO.

STEP INTO ACTION:

We aim to continuously advance not only our technology and expertise but also the industries we serve. We are proud to introduce the brand SFC PRO.

Our industrial brand, SFC PRO, supports safety and comfort throughout your workday, no matter what surprises it may hold. This is our focus — industrial environments and their specific challenges.

SFC PRO SHOE STYLES CAN BE FOUND ACROSS THE FOLLOWING PRODUCT CATEGORIES:

Safety Shoes, M.A.P.S. (Military, Ambulance, Police, Security), and Wellingtons.



SAFETY



M.A.P.S.



WELLINGTONS



SAFETY SHOES



HIGH LEVELS OF SAFETY AND COMFORT WITHOUT ANY COMPROMISES – OUR SAFETY SHOES WON'T LET YOU DOWN, NO MATTER HOW STRENUOUS YOUR WORKLOAD.

All safety models feature a toe cap made from either composite or steel, along with padded, removable insoles, and are equipped with one of our special outsole technologies.



BARRA

Unisex: 72533 Black 3-13 (36-48)
72534 White 3-13 (36-48)

EN ISO 20345:2022 [S3L FO SR LG ESD]

- > Regular fit
- > Removable cushioned insole (recycled EVA)
- > Energy-absorbing heel construction
- > Composite toe cap - 200 joules
- > Puncture-resistant
- > Superior slip- and clog-resistant outsole with TripGuard
- > Waterproof, recycled microfibre upper
- > Recycled polyester lining
- > Metal-free, antistatic
- > Resistant to fuel oil
- > Vegan
- > Weight per shoe: 585 grams (based on size 44)



50+



BERGAMO

Unisex: 72450 Black 3-12 (36-47)

EN ISO 20345:2022 [S3L HRO FO SR ESD]

- > Removable cushioned insole (recycled)
- > Energy-absorbing heel construction
- > Heat resistant outsole up to 300 °C
- > Composite toe cap - 200 joules
- > Puncture-resistant
- > Water-resistant knitted upper
- > Metal-free
- > Antistatic
- > Resistant to fuel oil
- > Weight per shoe: 615 grams (based on size 42)



BRANDON

Unisex: 76642 Black 3-13 (36-48)
76643 White 3-13 (36-48)

EN ISO 20345:2022 [S3L FO SR LG ESD]

- > Regular fit
- > Removable cushioned insole (recycled EVA)
- > Superior slip- and clog-resistant outsole with TripGuard
- > Energy-absorbing heel construction
- > Composite toe cap - 200 joules
- > Puncture-resistant
- > Waterproof, recycled microfibre upper
- > Recycled polyester lining
- > Metal-free, antistatic
- > Resistant to fuel oil
- > Vegan
- > Weight per shoe: 585 grams (based on size 44)



50+





CAMBRIDGE II ST

Unisex: 52151 Black 5-13 (38-48)

EN ISO 20345:2022 [S2 FO SR]

- > Removable cushioned insole (recycled EVA)
- > Energy-absorbing heel construction
- > Steel toe cap - 200 joules
- > Waterproof, recycled microfibre upper
- > Recycled polyester lining
- > Easy to clean
- > Metal-free, antistatic
- > Vegan
- > Weight per shoe: 525 grams (based on size 44)



MADE IN ITALY



CATANIA

Unisex: 72444 Black 3-12 (36-47)
72445 White 3-12 (36-47)

EN ISO 20345:2022 [S3L HRO FO SR]

- > Removable cushioned insole
- > Energy-absorbing heel construction
- > Heat-resistant outsole up to 300 °C
- > Composite toe cap - 200 joules
- > Puncture-resistant
- > Water-resistant microfibre upper
- > Metal-free
- > Antistatic
- > Resistant to fuel oil
- > Weight per shoe: 560 grams (based on size 42)





BESTSELLER

CLYDE MEN | BONNIE WOMEN

Men: 73403 Black 5-12 (38-47)
 Women: 78393 Black 3-8 (36-42)

EN ISO 20345:2022 [S3L FO SR]

- > Regular fit
- > Removable cushioned insole (recycled EVA)
- > Composite toe cap - 200 joules
- > Superior slip- and clog-resistant outsole
- > Energy-absorbing heel construction
- > Puncture-resistant
- > Waterproof, recycled microfibre upper
- > Recycled polyester lining
- > Metal-free, antistatic
- > Resistant to fuel oil
- > Vegan
- > Weight per shoe: 555 grams (based on size 44)



COLLY

Unisex: 75660 Black 3-13 (36-48)

EN ISO 20345:2022 [S3L FO SR ESD]

- > Regular fit
- > Removable cushioned insole (recycled EVA)
- > Superior slip- and clog-resistant outsole with TripGuard
- > Energy-absorbing heel construction
- > Composite toe cap - 200 joules
- > Puncture-resistant
- > Waterproof, recycled microfibre upper
- > Recycled polyester lining
- > Metal-free, antistatic, vegan
- > Resistant to fuel oil
- > Weight per shoe: 540 grams (based on size 44)



ENGINEER IV CT

Unisex: 76737 Black 3-13 (36-48)

EN ISO 20345:2022 [S7L SR LG]

- > Removable cushioned insole (recycled EVA)
- > Energy-absorbing heel construction
- > Composite toe cap - 200 joules
- > Puncture-resistant
- > TripGuard
- > Clog-resistant outsole
- > Waterproof coated leather upper
- > Recycled polyester lining
- > Metal-free, antistatic
- > Easy to clean
- > Weight per shoe: 718 grams (based on size 41)





EXECUTIVE WING TIP II ST

Men: 52181 Black 3-12 (36-47)

EN ISO 20345:2022 [S2 FO SR]

- > Removable cushioned insole (recycled EVA)
- > Energy-absorbing heel construction
- > Steel toe cap - 200 joules
- > Water-resistant leather upper
- > Recycled polyester lining
- > Metal-free, antistatic
- > Weight per shoe: 665 grams (based on size 42)



FERGUS

Unisex: 78493 Black 3-13 (36-48)

79778 Denim 3-13 (36-48)

EN ISO 20345:2022 [S3L FO SR]

- > Regular fit
- > Removable cushioned insole (recycled EVA)
- > Composite toe cap - 200 joules
- > Superior slip- and clog-resistant outsole with TripGuard
- > Energy-absorbing heel construction
- > Puncture-resistant
- > Antistatic
- > Waterproof leather upper/denim
- > Recycled polyester lining
- > Resistant to fuel oil
- > Weight per shoe: 580 grams (based on size 44)



FORKHILL

Unisex: 79112 Black 3-13 (36-48)

EN ISO 20345:2022 [S3L SR LG]

- > Regular fit
- > Removable cushioned insole (recycled EVA)
- > Superior slip- and clog-resistant outsole with TripGuard
- > Energy-absorbing heel construction
- > Composite toe cap - 200 joules
- > Puncture-resistant
- > Waterproof, recycled microfibre upper
- > Recycled polyester lining
- > Metal-free, antistatic
- > Weight per shoe: 585 grams (based on size 44)





INNY

Unisex: 74893 White 3-13 (36-48)

EN ISO 20345:2022 [S3L FO SR]

- > Regular fit
- > Removable cushioned insole (recycled EVA)
- > Superior slip- and clog-resistant outsole with TripGuard
- > Energy-absorbing heel construction
- > Composite toe cap - 200 joules
- > Puncture-resistant
- > Waterproof, recycled microfibre upper
- > Recycled polyester lining
- > Metal-free, antistatic
- > Resistant to fuel oil
- > Vegan
- > Weight per shoe: 598 grams (based on size 42)



SALERNO **NEW**

Unisex: 72449 Black 3-12 (36-47)
72448 White 3-12 (36-47)

EN ISO 20345:2022 [S3L HRO FO SR]

- > Removable cushioned insole
- > Energy-absorbing heel construction
- > Composite toe cap - 200 joules
- > Puncture-resistant
- > Water-resistant microfibre upper
- > Metal-free
- > Antistatic
- > Resistant to fuel oil
- > Weight per shoe: 590 grams (based on size 42)



TRISTON II SB

Unisex: 80045 Black 3-12 (36-47)
80046 White 3-12 (36-47)

EN ISO 20345:2022 [SB E SR]

- > Removable cushioned insole (recycled EVA)
- > Composite toe cap - 200 joules
- > Clog-resistant outsole
- > Energy-absorbing heel construction
- > Water-resistant, recycled microfibre upper
- > Recycled polyester lining
- > Metal-free
- > Weight per shoe: 429 grams (based on size 44)



SAFETY SHOES FROM PUMA



STYLE MEETS SAFETY.

The PUMA safety collection sets new standards in terms of comfort, wearability, and slip-resistance. And with three colour options available, there's an added bonus: Look stylish while keeping safe!



PUMA
SAFETY

BESTSELLER

AIRTWIST

Unisex: 643761 Black/white 3-13 (36-48)

EN ISO 20345:2022 [S3S ESD FO HRO SR]

- > Comfort footbed
- > Shock-absorbing IDCell element
- > Composite toe cap - 200 joules
- > Puncture-resistant
- > BreathActive functional lining
- > Microfibre upper
- > Heat-resistant up to 300 °C
- > Clog-resistant
- > Metal-free
- > Vegan
- > Weight per shoe: 580 grams (based on size 43)



PUMA
SAFETY

FRONTSIDE

Unisex: 643771 Blue 3-13 (36-48)

EN ISO 20345:2022 [S1PS ESD FO HRO SR]

- > Comfort footbed
- > Shock-absorbing IDCell element
- > Composite toe cap - 200 joules
- > Puncture-resistant
- > BreathActive functional lining
- > Microfibre upper
- > Heat-resistant up to 300 °C
- > Clog-resistant
- > Metal-free, antistatic
- > Vegan
- > Weight per shoe: 560 grams (based on size 43)



PUMA
SAFETY

FRONTSIDE

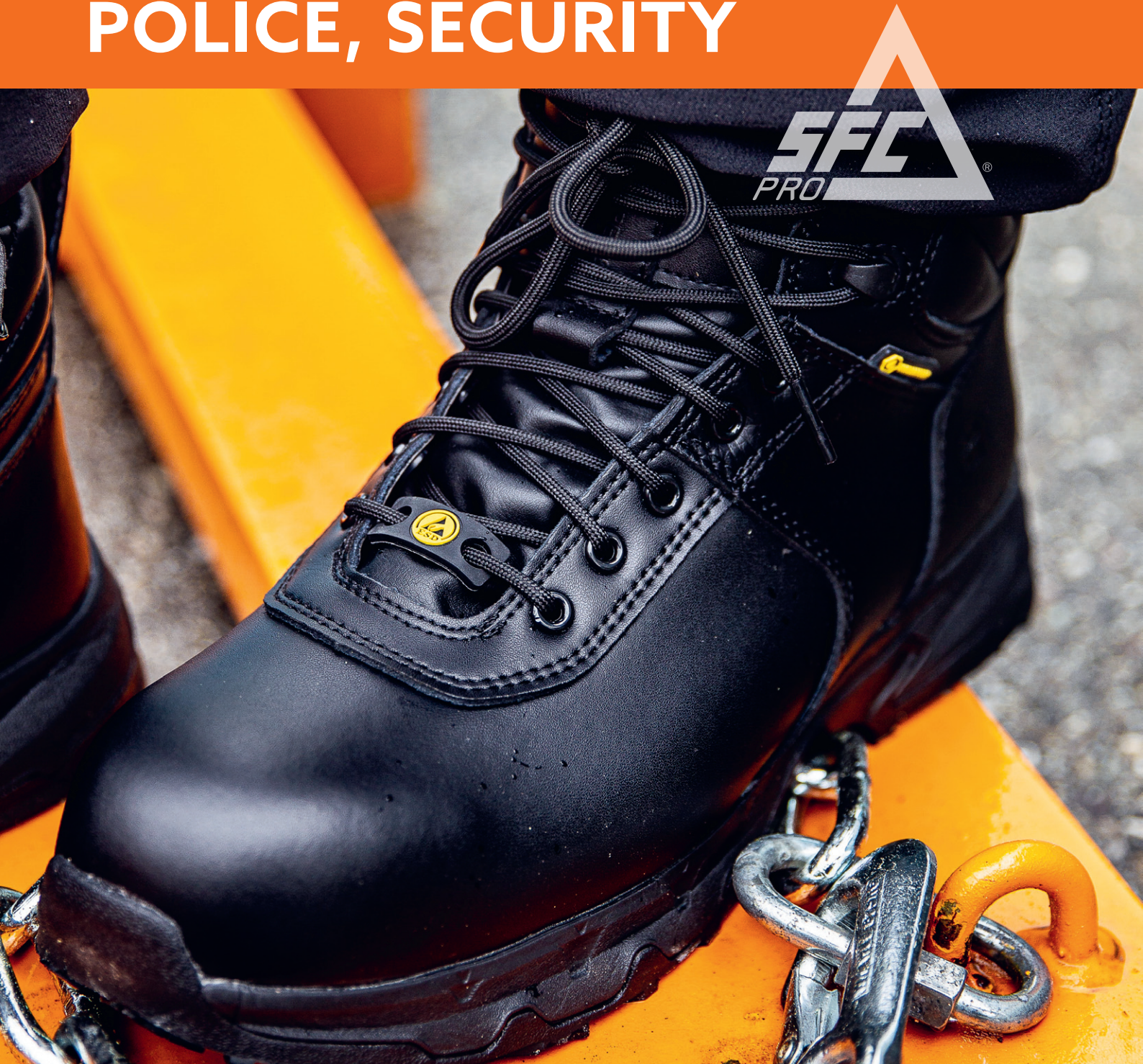
Unisex: 643001 Brown/ivy 3-13 (36-48)

EN ISO 20345:2022 [S1PS ESD FO HRO SR]

- > Comfort footbed
- > Shock-absorbing IDCell element
- > Composite toe cap - 200 joules
- > Puncture-resistant
- > BreathActive functional lining
- > Microfibre upper
- > Heat-resistant up to 300 °C
- > Clog-resistant
- > Metal-free, antistatic
- > Vegan
- > Weight per shoe: 560 grams (based on size 43)



M.A.P.S. | SHOES FOR MILITARY, AMBULANCE, POLICE, SECURITY



READY FOR USE AT ANY TIME. WITHOUT COMPROMISE.

Well equipped for use: When every second counts, solid and comfortable footwear is the be-all and end-all. Our footwear for military, ambulance, police and security (M.A.P.S.) provide excellent levels of comfort with a highly slip-resistant outsole.



BELTRA

Unisex: 62208 Black 2.5-15 (35-50)

EN ISO 20347:2022 [O6 SR]

- > Removable cushioned insole (recycled EVA)
- > Extra cushioning
- > Breathable
- > Superior slip-resistant outsole with TripGuard
- > Two-part outsole for more control and flexibility
- > Durable, waterproof combination of coated leather and mesh
- > Recycled polyester lining
- > Metal-free, antistatic
- > Resistant to penetration by bloodborne pathogens
- > Weight per shoe: 376 grams (based on size 42)

4-T5
CE
O6
SR
50+



CALLAN LOW

Unisex: 62203 Black 2.5-13 (35-48)

EN ISO 20347:2022 [O6 HI CI SR ESD LG]

- > Removable cushioned insole (recycled EVA)
- > Extra cushioning
- > Superior slip-resistant outsole with TripGuard
- > Energy-absorbing heel construction
- > Heat and cold insulation
- > Waterproof coated leather upper
- > Recycled polyester lining
- > Metal-free, antistatic
- > Resistant to penetration by bloodborne pathogens
- > Weight per shoe: 510 grams (based on size 43)

4-T5
CE
O6
HI
CI
SR
ESD
LG
+



CALLAN MID

Unisex: 62204 Black 2.5-13 (35-48)

EN ISO 20347:2022 [O6 HI CI SR ESD LG]

- > Removable cushioned insole (recycled EVA)
- > Extra cushioning
- > Superior slip-resistant outsole with TripGuard
- > Energy-absorbing heel construction
- > Heat and cold insulation
- > Waterproof coated leather upper
- > Recycled polyester lining
- > Metal-free, antistatic
- > Resistant to penetration by bloodborne pathogens
- > Weight per shoe: 585 grams (based on size 42)

4-T5
CE
O6
HI
CI
SR
ESD
LG
+

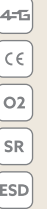


CAMBRIDGE GL

Unisex: 62207 Black 5-14 (38-49)

EN ISO 20347:2022 [O2 SR ESD]

- > Classic professional style
- > Removable cushioned insole (recycled EVA)
- > Padded comfort collar
- > Waterproof leather upper
- > Recycled polyester lining
- > Metal-free
- > Highly clog-resistant outsole for outdoor use
- > Weight per shoe: 360 grams (based on size 42)



CARRIG LOW

Unisex: 62201 Black 2.5-13 (35-48)

EN ISO 20347:2022 [O6 HI CI SR ESD LG]

- > Removable cushioned insole (recycled EVA)
- > Extra cushioning, energy-absorbing heel construction
- > Breathable
- > Superior slip-resistant outsole with TripGuard
- > Heat and cold insulation
- > Durable, waterproof combination of coated leather and mesh
- > Recycled polyester lining
- > Metal-free, antistatic
- > Resistant to penetration by bloodborne pathogens
- > Weight per shoe: 526 grams (based on size 43)



CARRIG MID

Unisex: 62202 Black 2.5-13 (35-48)

EN ISO 20347:2022 [O6 HI CI SR ESD LG]

- > Removable cushioned insole (recycled EVA)
- > Extra cushioning, energy-absorbing heel construction
- > Breathable
- > Superior slip-resistant outsole with TripGuard
- > Heat and cold insulation
- > Durable, waterproof combination of coated leather and mesh
- > Recycled polyester lining
- > Metal-free, antistatic
- > Resistant to penetration by bloodborne pathogens
- > Weight per shoe: 507 grams (based on size 39)





DARVER

Unisex: 62209 Black 2.5-13 (35-48)

EN ISO 20347:2022 [O6 HI CI HRO SR ESD LG]

- > Removable cushioned insole (recycled EVA)
- > Extra cushioning, energy-absorbing heel construction
- > Breathable
- > Superior slip-resistant outsole with TripGuard
- > Heat-resistant outsole up to 300 °C
- > Durable, waterproof combination of coated leather and mesh
- > Recycled polyester lining
- > Metal-free, antistatic
- > Resistant to penetration by bloodborne pathogens
- > 9" or 22.8 cm shaft height
- > Weight per shoe: 618 grams (based on size 42)

4-TG
CE
O6
HI
CI
HRO
SR
ESD
LG
+
50+



DEFENSE HIGH

Unisex: 62211 Black 3-13 (36-48)

EN ISO 20347:2022 [O6 HRO SR ESD LG]

- > Removable cushioned insole (recycled EVA)
- > Extra cushioning
- > Energy-absorbing heel construction
- > Breathable and waterproof
- > Superior slip-resistant outsole with TripGuard
- > Heat-resistant outsole up to 300 °C
- > Durable combination of coated leather and mesh
- > Recycled polyester lining
- > Metal-free, antistatic
- > Resistant to penetration by bloodborne pathogens
- > Sidezipper
- > 8" or 20.3 cm shaft height
- > Weight per shoe: 544 grams (based on size 39)

4-TG
CE
O6
HRO
SR
ESD
LG
+

Enjoy the comfort of our sidezipper: Step in and get out.





DEFENSE MID

Unisex: 62210 Black 3-13 (36-48)

EN ISO 20347:2022 [O6 HRO SR ESD LG]

- > Removable cushioned insole (recycled EVA)
- > Extra cushioning
- > Energy-absorbing heel construction
- > Breathable and waterproof
- > Superior slip-resistant outsole with TripGuard
- > Heat-resistant outsole up to 300 °C
- > Durable combination of coated leather and mesh
- > Recycled polyester lining
- > Metal-free, antistatic
- > Resistant to penetration by bloodborne pathogens
- > Sidezipper
- > 6" or 15.2 cm shaft height
- > Weight per shoe: 508 grams (based on size 39)



DELVIN

Unisex: 72211 Black 2.5-13 (35-48)

EN ISO 20345:2022 [S7L CI SR]

- > Removable cushioned insole (recycled EVA)
- > Extra cushioning, energy-absorbing heel construction
- > Composite toe cap - 200 joules
- > Toe cap for extra protection
- > 200 grams cold insulation
- > Puncture-resistant
- > Superior slip-resistant outsole with TripGuard
- > Waterproof coated leather upper
- > Recycled polyester lining
- > Metal-free, antistatic
- > 8" or 20.3 cm shaft height
- > Weight per shoe: 793 grams (based on size 42)





GUARD MID

Unisex: 72237 Black 3-13 (36-48)
 EN ISO 20345:2022 [S7L HRO SR ESD LG]

- > Removable cushioned insole (recycled EVA)
- > Extra cushioning, energy-absorbing heel construction
- > Composite toe cap - 200 joules
- > Puncture-resistant
- > Superior slip-resistant outsole with TripGuard
- > Heat-resistant outsole up to 300 °C
- > Waterproof coated leather upper
- > Recycled polyester lining
- > Metal-free, antistatic
- > Resistant to penetration by bloodborne pathogens
- > Sidezipper
- > 6" or 15.2 cm shaft height
- > Weight per shoe: 746 grams (based on size 43)



BESTSELLER

GUARD HIGH

Unisex: 72238 Black 3-13 (36-48)
 EN ISO 20345:2022 [S7L HRO SR ESD LG]

- > Removable cushioned insole (recycled EVA)
- > Extra cushioning, energy-absorbing heel construction
- > Composite toe cap - 200 joules
- > Puncture-resistant
- > Superior slip-resistant outsole with TripGuard
- > Heat-resistant outsole up to 300 °C
- > Waterproof coated leather upper
- > Recycled polyester lining
- > Metal-free, antistatic
- > Resistant to penetration by bloodborne pathogens
- > Sidezipper
- > 8" or 20.3 cm shaft height
- > Weight per shoe: 775 grams (based on size 43)



Only available for UK customers

STRATTON III

Unisex: 64666 Black 3-13 (36-48)
 EN ISO 20347:2022 [O6 SR LG]

- > Removable cushioned insole (recycled EVA)
- > Extra cushioning
- > Superior slip-resistant outsole with TripGuard
- > Waterproof leather upper
- > Recycled polyester lining
- > Metal-free
- > Resistant to fuel oil
- > Weight per shoe: 584 grams (based on size 38)



WELLINGTONS



NO NEED TO WORRY ABOUT THE WET OR DIRT.

Our wellingtons can do so much more: Keep liquids at bay. Protect against extreme cold temperature. And protect your toes from falling objects.

BESTSELLER



BASTION

Unisex: 76690 White/blue 4-12 (37-47)
70557 Green 4-12 (37-47)

EN ISO 20345:2011 [S4 SRC FO]

- > Ventilated to keep your feet cool
- > Energy-absorbing heel construction
- > Steel toe cap - 200 joules
- > PVC upper and outsole
- > 40 cm tall waterproof boot
- > Vegan, antistatic
- > Weight per shoe: 1,200 grams (based on size 38)



GUARDIAN

Unisex: 2017B White/blue 4-13 (37-48)
2018 Green 4-13 (37-48)

EN ISO 20345:2011 [S4 SRC FO]

- > Removable cushioned insole (recycled EVA)
- > Energy-absorbing heel construction
- > Steel toe cap - 200 joules
- > PVC upper
- > Clog-resistant SFC outsole
- > 40 cm tall waterproof boot
- > Vegan, antistatic
- > Weight per shoe: 840 grams (based on size 38)



SENTINEL

Unisex: 2010B White/blue 3-11 (36-46)
2011 Green 3-11 (36-46)
2012 Blue 3-11 (36-46)

EN ISO 20345:2011 [S4 SRC FO]

- > Removable cushioned insole (recycled EVA)
- > Energy-absorbing heel construction
- > Steel toe cap - 200 joules
- > Insulation provides protection at temperatures as low as -20 °C
- > Polyurethane (PU) upper
- > Clog-resistant SFC outsole
- > 36 cm tall waterproof boot
- > Vegan, antistatic
- > Weight per shoe: 575 grams (based on size 38)



The Sentinel is 36 cm high. The insulation protects against cold temperatures right down to -20 °C.



OVERSHOES, ACCESSORIES, MATS



DO YOU NEED MORE COMFORT OR A REPLACEMENT?

Crewguards® are overshoes designed for quick and temporary protection. For insoles, you can choose between options offering extra comfort or a second pair for replacement. Complementing these are sustainable socks made from Merino wool or recycled materials. Equally practical are our slip-resistant floor mats, transforming any greasy, slippery surface into a surface with unprecedented grip.



CREWGUARD® SAFETY

Unisex: 53 Black XS-XXL

EN ISO 20345:2022 [SR FO TOE-PROTECTION]

- > Steel toe cap - 200 joules
- > Fits snugly and securely over almost any pair of work shoes
- > SFC mighty grip slip-resistant sole provides maximum slip and fall protection
- > Ideal for anyone not already wearing our top-rated footwear
- > Water-repellent against spills



CREWGUARD® STRETCH

Unisex: G7014 Black S-XL

EN ISO 20347:2022 [SR FO]

- > Fits snugly and securely over almost any pair of work shoes
- > SFC mighty grip slip-resistant sole provides maximum slip and fall protection
- > Ideal for anyone not already wearing our top-rated footwear
- > Water-repellent against spills
- > Metal-free



SIZE TABLE

Size	XS	S	S+	M	M+	L	XL	XXL
Stretch EU		34-36		37-41		41.5-45	45.5-47	
Stretch UK		2-3		4-7		7.5-10	10.5-12	
Safety EU	35-37	37-38	39-41	41-42	43-44	44-45	46-48	49-51
Safety UK	2.5-4	4-5	6-7	7-8	9-9.5	9.5-10	11-13	14-16



Damp or greasy feet?
No problem with Crewguards®.



COMFORT INSOLES

- Unisex: N3411 4-15 (37-50)
- > Adaptable arch allows foot to react to natural movements
 - > EVA cushioning layer



COMFORT GEL INSOLES

- Unisex: N2114 4-13 (37-48)
- > The supple arch follows the natural movement of the feet
 - > Shock-absorbing gel pads for maximum comfort
 - > Polyurethane padding



SFC CREW SOCKS

- | | | |
|-------------------------------|-------------|------|
| Unisex sock recycled material | S2307 Black | S-XL |
| Unisex sock merino wool | S2308 Black | S-XL |
- > **Recycled material sock:** Made with 100% recycled polyester material
 - > Extra cushioning throughout the sock
 - > Extra elastic in leg and arch band
 - > **Merino sock:** Blend of 38% merino wool, 38% polyester, 22% polyamide and 2% elasthane
 - > Extra cushioning throughout the sock
 - > Extra elastic in leg and arch band
 - > Nylon reinforcement in toe and heel

50+

SFC NO-SHOW SOCKS

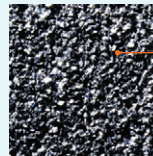
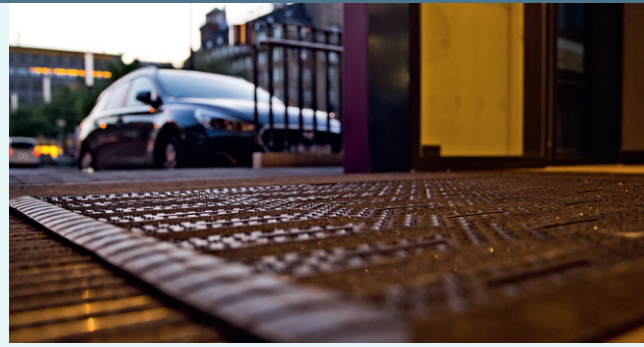
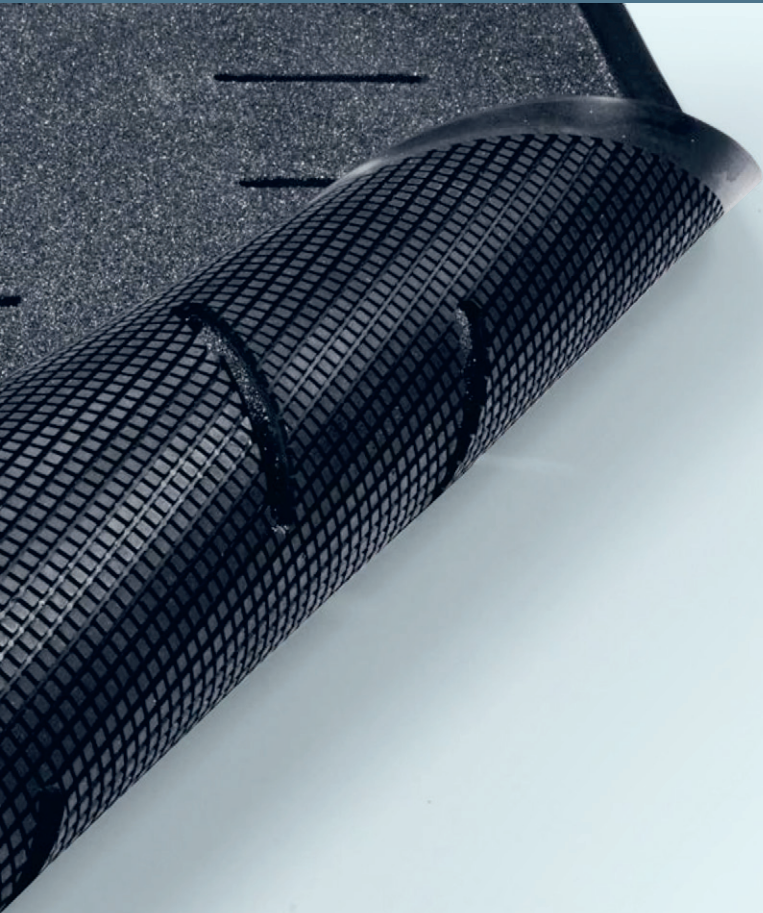
- | | | |
|-------------------------------|-------------|------|
| Unisex sock recycled material | S2305 Black | S-XL |
| Unisex sock merino wool | S2306 Black | S-XL |
- > **Recycled material sock:** Made with 100% recycled polyester material
 - > Extra cushioning in the footbed
 - > Extra elastic in cuff and arch band
 - > **Merino sock:** Blend of 53% merino wool, 45% polyamide, 2% elasthane
 - > Ultralight sock, no cushioning
 - > Extra elastic in cuff and arch band
 - > Nylon reinforcement in toe and heel

50+

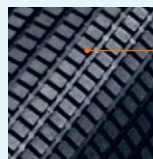
SOCKS SIZE TABLE

Size	S	M	L	XL
EU Size	35-38	39-42	43-46	47-50
US Size men	5-7	7.5-9.5	10-12.5	13-15
US Size women	6-8.5	9-11	11.5+	-
UK Size	3.5-5.5	6-8	8.5-12	12.5+

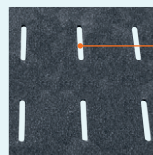




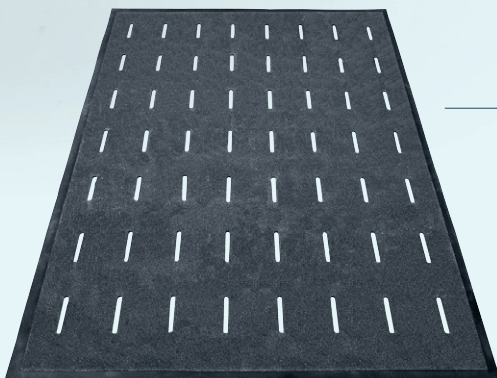
Non-slip surface for safe footing.



Non-slip SFC underlay keeps the mat firmly and securely in place.



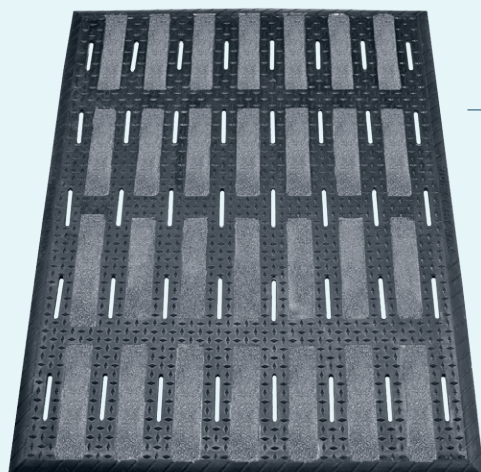
Perforations allow liquids to drain from the surface.



MIGHTY MAT® CLASSIC

20 Black 91.44 x 152.40 cm

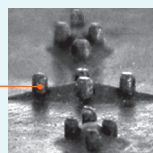
- > High traction, slip-resistant surface
- > Patented slip-resistant rubber base
- > All grip upper with serrated edge for added durability
- > Height: 6.5 mm - fits under doorways



MIGHTY MAT® MAX II

40 Black 91.44 x 121.92 cm

- > High traction, slip-resistant surface
- > Rubberised diamond plate pattern
- > Patented slip-resistant rubber base and grid pattern
- > Anti-fatigue cushion provides all-day comfort
- > Height: 14.8 mm



WHY SFC? BECAUSE...



"... WE WANT EVERYONE TO START
THEIR DAY FEELING GOOD AND STANDING FIRMLY
ON THEIR OWN TWO FEET."

THE SLIP-RESISTANT OUTSOLE? BETTER THAN JUST GOOD. OTHER COMFORTS? EXACTLY THE SAME.

TRIPGUARD – TO HELP REDUCE FALLS

Large lugs on the front of the shoe can cause a trip hazard, so we developed TripGuard. Thanks to the slight bend and narrow lug profile, you can easily move between slippery surfaces, carpets and runners.

SPILLGUARD – TO PROTECT AGAINST SPILLS

If you handle liquids in the workplace, your feet need splash protection. That's why we have incorporated a membrane in many designs to keep the foot dry.

LIGHTWEIGHT – AS LIGHT AS A FEATHER ON YOUR FEET

Our shoes are particularly light thanks to the foam composite we use. This technology makes every step 100 grams lighter. Calculated over an 8-hour shift, this brings enormous relief for your legs and joints.

EASY CLEAN

Easy cleaning is a key feature of our footwear designs: The materials and coatings we use help to keep your footwear looking tip-top and well cared for with little maintenance required.

SLIP RESISTANCE

Our various outsole technologies provide excellent slip resistance and are precisely tailored to the specific requirements of their environments. For example, an outsole designed for the hospitality industry must perform well on greasy surfaces, while an outsole for emergency personnel needs to ensure safety in all weather conditions and on any terrain.

HOW IS THE SLIP RESISTANCE OF A SHOE MEASURED?

When testing the slip resistance of a shoe, the shoe is clamped in different positions in a measuring device and guided over the various testing floors.

The slip resistance of footwear is tested according to the set of European testing methods standards written into EN ISO 20344:2021. Footwear which has passed the test for slip resistance will be marked with the SR code:

- **Standard requirement:** slip test on ceramic floors with Sodium Lauryl Sulphate (SLS).
- **SR class:** slip test on ceramic floors with Glycerine.

Detailed information about the different SFC outsoles and the test results can be found on the following pages.

Our mission:
**MAXIMUM COMFORT
WITH EVERY STEP.**



OUR SFC OUTSOLE



SAFE GRIP WITH EVERY STEP — OUTSOLE TECHNOLOGY YOU CAN RELY ON.



Whether in hospitality, healthcare, or retail, wet or oily surfaces can quickly become a hazard for workers throughout the day.

The trusted SFC outsole provides safety with every step. As the tests below demonstrate, its excellent slip resistance far exceeds the industry standard. This effectively helps decrease and prevent workplace accidents caused by slipping or falling.



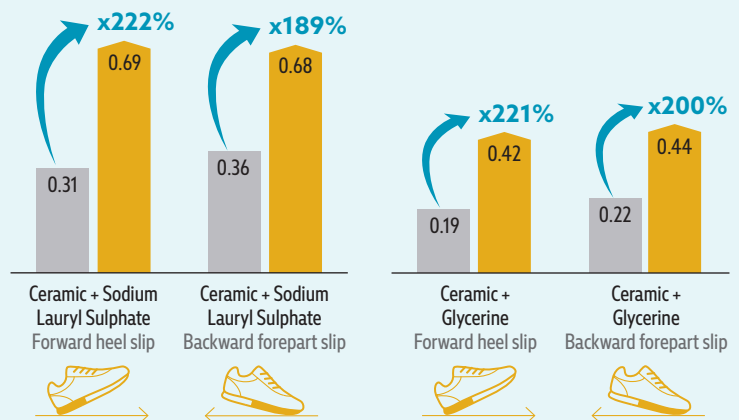
Wet or oily ceramic tiles can quickly become a slipping hazard. The SFC outsole provides grip and excellent slip resistance.



TESTING THE SLIP RESISTANCE OF OUR SFC OUTSOLE [EN ISO 20344:2021]

STANDARD REQUIREMENT

SR REQUIREMENT



■ Shoes For Crews outsole
■ Industry standard

Slip resistance test according to EN ISO 20344:2021, conducted by Intertek Testing Services Shenzhen Ltd., in August 2022; on a scale of 0.0 (without slip resistance) to 1.0 (very high level of slip resistance, e.g. on dry carpeted floors). All SFC shoes are fitted with the patented, slip-resistant Shoes For Crews outsole.

OUR ICE PRO OUTSOLE



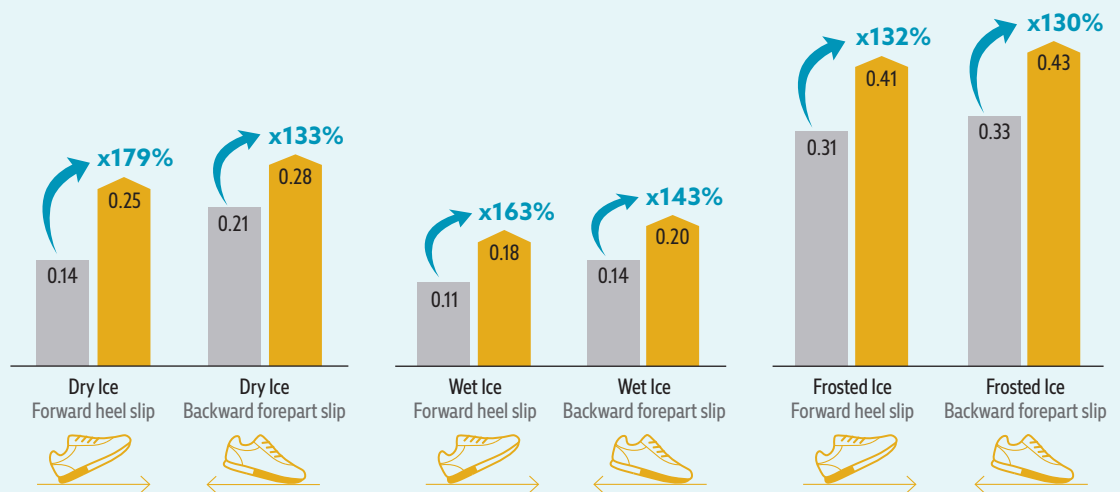
RELIABLE TRACTION. EVEN ON ICE.

Slushy snow and wet or frozen ice are extremely unfavourable conditions for safe work. That's precisely why we've developed the ICE PRO outsole:

With its unique structure and sophisticated material blend, it provides superior slip resistance on icy surfaces when compared with the competition.

The structure and material compound of the ICE PRO outsole provide high levels of slip resistance, particularly on icy surfaces.

TESTING THE SLIP RESISTANCE OF OUR ICE PRO OUTSOLE ON ICE [SATRA TM144:2021]



■ ICE PRO outsole
■ Recognized competitor

Slip resistance test according to SATRA TM144:2021, conducted by Intertek Testing Services Shenzhen Ltd., in December 2022; on a scale of 0.0 (without slip resistance) to 1.0 (very high level of slip resistance, e.g. on dry carpeted floors). All SFC shoes are fitted with the patented, slip-resistant Shoes For Crews outsole.

OUR SFC PRO 4SG OUTSOLE



THE ALL SEASONS GRIP SOLE

Prevent accidents on wet, icy, and oily surfaces: Our 4SG Four Seasons Grip outsole is specifically designed for challenging surfaces and environments – across all seasons and weather conditions.

It meets the EN ISO 20344:2021 standard and surpasses the industry standard in terms of slip resistance and safety. As the results on the following page demonstrate, this outsole offers exceptional slip resistance properties – even on ice!

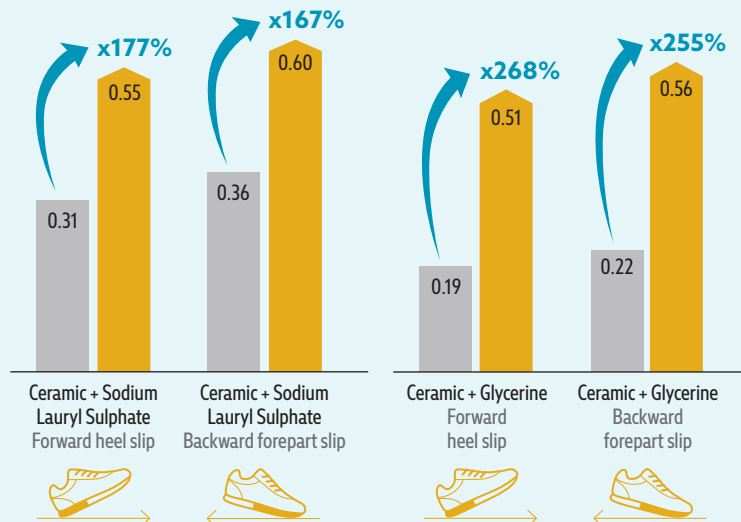
TESTING THE SLIP RESISTANCE OF OUR 4SG FOUR SEASONS GRIP OUTSOLE [EN ISO 20344:2021]

STANDARD REQUIREMENT

SR REQUIREMENT

- 4SG outsole
- Recognized competitor

Slip resistance test according to EN ISO 20344:2021, conducted by Intertek Testing Services Shenzhen Ltd., in December 2022; on a scale of 0.0 (without slip resistance) to 1.0 (very high level of slip resistance, e.g. on dry carpeted floors). All SFC shoes are fitted with the patented, slip-resistant Shoes For Crews outsole.



OUR SHOE TECHNOLOGIES

THE LAYERS OF OUR WORK SHOES (SFC OUTSOLE)



THE LAYERS OF OUR SAFETY SHOES (SFC PRO 4SG OR ICE PRO OUTSOLE)



PURCHASING TIPS



COMFORT FIRST. THE RIGHT SIZE. A GOOD FIT.

WHICH SHOE SHOULD YOU CHOOSE?

Do I need a comfortable shoe that allows me to cover many kilometres every day without experiencing tired legs in the evening? Am I exposed to liquids? Or do I need to look smart but also wear a safety shoe while on shift?

Our purchasing guide explains the key safety norms as well as product features. This helps you quickly find the right shoe for your needs.



SAFETY CATEGORIES

The distinction between occupational and safety shoes is necessary because not every occupational shoe is automatically categorized as a safety shoe:

- **Occupational shoes** can provide protective elements such as slip resistance or protection from liquids, but they lack the protective toe cap.
- **Safety shoes** must have a protective toe cap that can withstand a load of at least 200 joules.

OCCUPATIONAL SHOES (Categories as of norm EN 20347)

	Closed heel area	A Antistatic	E Energy absorption of seat region	WPA No water penetration in upper material	WR Water resistance	Cleated outsole	P/PS/PL Penetration protection made of steel or composite
0B							
01	■	■	■				
02	■	■	■	■			
03	■	■	■	■		■	■
04	■	■	■	■			
05	■	■	■	■		■	■
06	■	■	■		■		
07	■	■	■		■	■	■

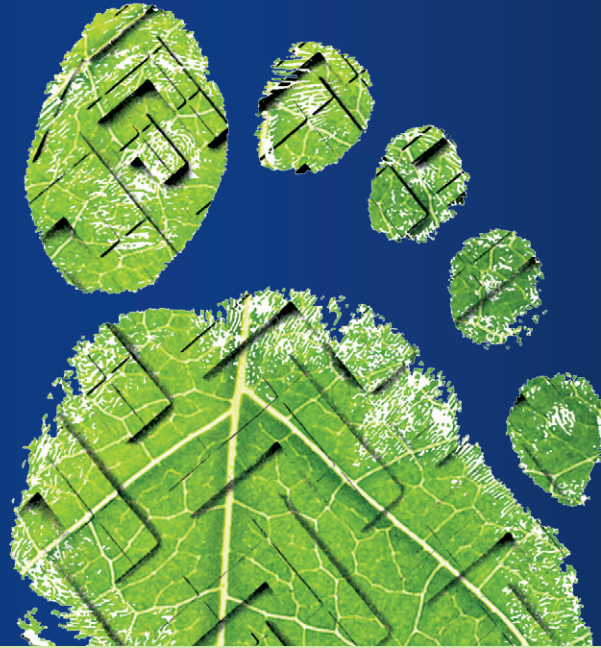
The categories 0B, 01, 02, 03, 06 and 07 refer to shoes made of leather or textiles and other materials. The 04 and 05 categories are shoes that have been wholly moulded, including solid rubber shoes (i.e. vulcanised shoes as a whole).

SAFETY SHOES (Categories as of norm EN 20345)

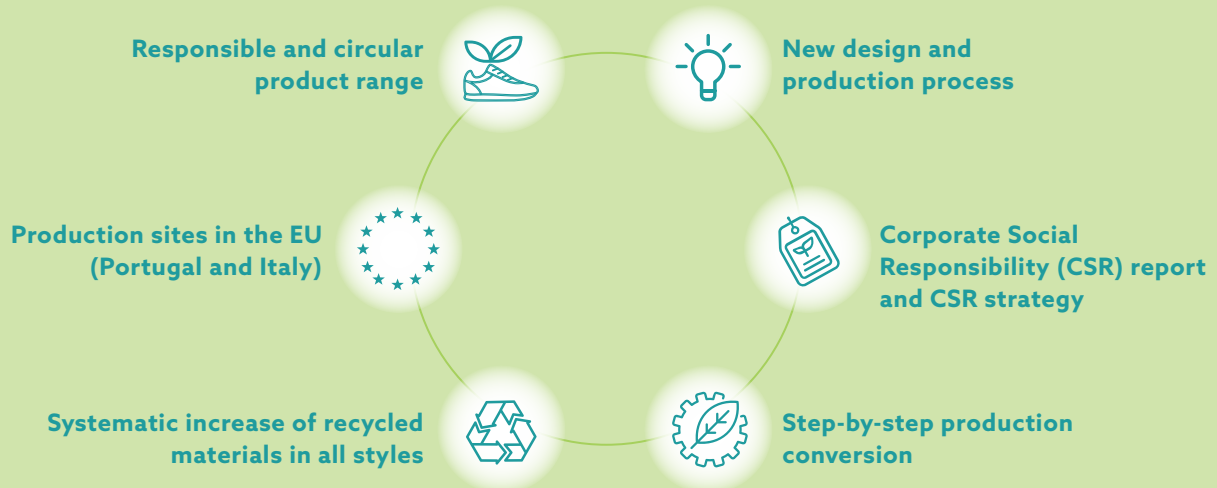
	Toe cap	Mandatory level of slip resistance	Closed heel area	A Antistatic	E Energy absorption of seat region	P Perforation resistance (metal insert)	PS Perforation resistance (non metal insert, 3.0 mm nail)	PL Perforation resistance (non metal insert, 4.5 mm nail)	WPA No water penetration in upper material	Cleated outsole	WR Water resistance
SB	■	■									
S1	■	■	■	■	■						
S1P	■	■	■	■	■	■					
S1PS	■	■	■	■	■		■				
S1PL	■	■	■	■	■			■			
S2	■	■	■	■	■				■		
S3	■	■	■	■	■	■			■	■	
S3S	■	■	■	■	■		■		■	■	
S3L	■	■	■	■	■			■	■	■	
S4	■	■	■	■	■						
S5	■	■	■	■	■	■				■	
S5S	■	■	■	■	■		■			■	
S5L	■	■	■	■	■			■		■	
S6	■	■	■	■	■				■		■
S7	■	■	■	■	■	■			■	■	■
S7S	■	■	■	■	■		■		■	■	■
S7L	■	■	■	■	■			■	■	■	■

Further categories:
 AN: Ankle protection
 C: Partly conductive
 CI: Cold insulation
 CR: Cut resistance
 ESD: Electrostatic discharge
 FO: Resistance to fuel oil
 HI: Heat insulation
 HRO: Resistance to heat contact
 LG: Ladder grip
 M: Metatarsal protection
 SC: Scuff cap abrasion
 SR: Slip resistance (ceramic tile floor with glycerine)

OUR FOOTPRINT IS GETTING NOTICEABLY SMALLER



OUR STRATEGY FOR SUSTAINABLE PRODUCTS:



WE ARE REDUCING THE ECOLOGICAL FOOTPRINT OF OUR SHOES



Our world is changing, so we can't stand still. To be ready for the future, Shoes For Crews is developing new materials and production methods to decrease our environmental footprint, step by step. We have therefore established an ISO 14001-certified environmental management system (EMS).

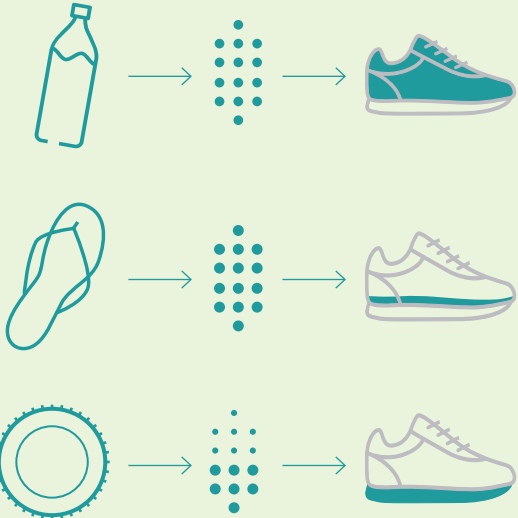


We support the United Nations' Sustainable Development Goals and have been a member of the UN Global Compact since March 2024.



OUR CIRCULARITY PROCESS FOR ECO-PRODUCTS:

Used PET bottles are converted to a granulate which we use to manufacture, among other things, a new inner lining for our shoes. The EVA material from old flipflops is granulated and recycled to produce new insoles. Old tyres are separated into their constituent materials, and the rubber is processed into granulate or powder form. From this, we make components for our new outsoles.



 **SHOES**
FOR CREWS[®] | STEP
INTO
ACTION™

01/2025



MORE ABOUT US

 Shoes For Crews (Europe) Ltd

<https://shoesforcrews.pro>